

STANDARD FEATURES

All Styles: Traditional high-polished sanitary finish, sanitary flanged rims and all stainless steel product contact parts.

Outlet: Exclusive Lee bottom outlet design permits a shorter outlet fitting. Sanitary Acme threaded or Tri-Clamp ferrule provided on stationary kettles.

Support: Stainless steel pipe legs with fixed floor flanges on stationary and tilting kettles.

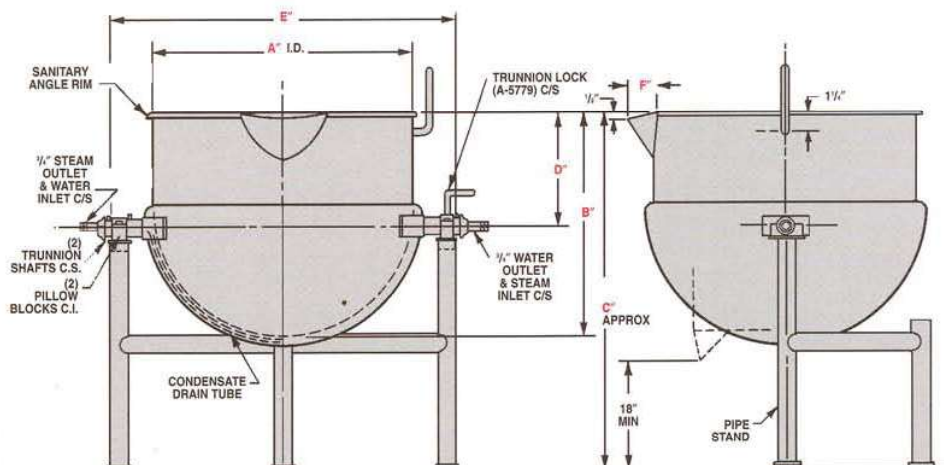
Trunnion Style: Free-pouring spout, safety latch, tilt handle on CD style and hydraulic tilting on style CHD.

STYLE CD

**SUPER JACKET
TRUNNION
MOUNTED WITH
MANUAL TILT**

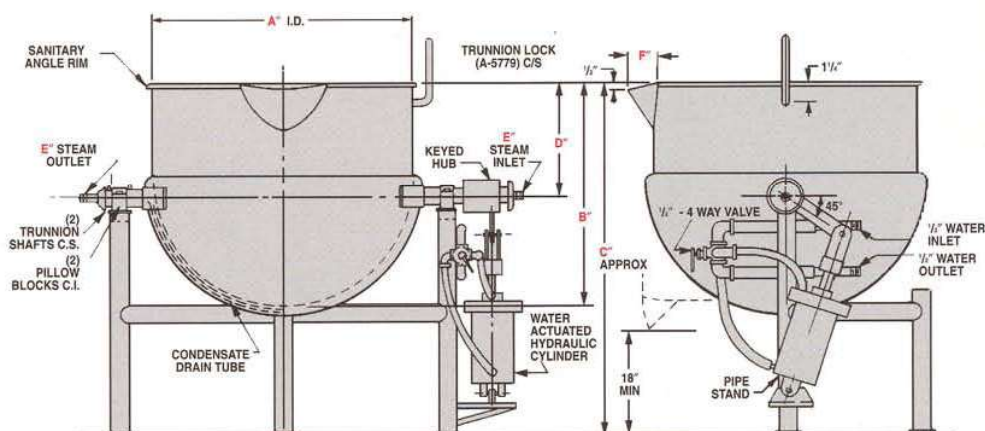
This CD style has a jacket as described but is trunnion-mounted and has a pouring lip for tilt-pouring. An outlet or valve may be added to the bottom for drainage or emptying. The positive latching meets Federal safety standards.

CAPACITY		5	10	15	20
DIMENSIONS	A	16 ³ / ₄	17 ¹ / ₂	18 ¹ / ₄	22
	B	10	14	16 ¹ / ₂	17
	C	32 ¹ / ₄	37	39 ¹ / ₂	41 ¹ / ₈
	D	4 ¹ / ₈	8 ⁷ / ₁₆	10 ⁵ / ₁₆	9 ⁷ / ₈
	E	26 ¹ / ₈	27	28 ¹ / ₈	31 ¹ / ₈
	F	2 ¹ / ₄	2 ¹ / ₂	2 ¹ / ₂	2 ³ / ₄



STYLE CHD

**SUPER JACKET
TRUNNION MOUNTED
WITH HYDRAULIC
CYLINDER**



Identical to the manual tilt models, Lee can provide hydraulically tilted trunnion kettles in capacities ranging from 25 through 1,000 gallons.

CAPACITY		25	30	40	50	60	75	80	100	125	150	200	250	300
DIMENSIONS	A	23	23	25 ¹ / ₂	29 ¹ / ₂	32	32	36	36	38	42	48	52	54
	B	20 ¹ / ₄	22	23 ¹ / ₂	23	24	27 ¹ / ₂	25	30	34	34 ¹ / ₂	36	39	42
	C	44	46	47 ¹ / ₂	48	49 ¹ / ₂	53	50 ¹ / ₂	55 ¹ / ₂	60	61 ¹ / ₂	64	67	70
	D	12 ¹ / ₂	14	14 ¹ / ₄	12 ³ / ₄	12 ¹ / ₂	16	11 ¹ / ₂	16 ¹ / ₂	19 ¹ / ₂	19	17 ¹ / ₂	18 ¹ / ₂	20 ¹ / ₂
	E	3 ³ / ₄	3 ³ / ₄	3 ³ / ₄	3 ³ / ₄	3 ³ / ₄	3 ³ / ₄	3 ³ / ₄	3 ³ / ₄	3 ³ / ₄	1	1	1	1
	F	2 ³ / ₄	3	3	3	3 ¹ / ₂	3 ¹ / ₂	3 ¹ / ₂	3 ¹ / ₂	4	4	5	5	5

OPTIONAL AND ACCESSORY EQUIPMENT

Instrumentation

A wide variety of temperature sensing control and recording instruments is available. Probe type sensors can be used in open kettles; but where scraper blade agitators are installed, it is recommended that a stainless steel flush mounted sensor be used. With today's processing techniques becoming ever more critical, temperature sensing or control instruments are desirable for heat transfer vessels.



MOTOR
SPEED CONTROL



PROBE-TYPE
SENSOR



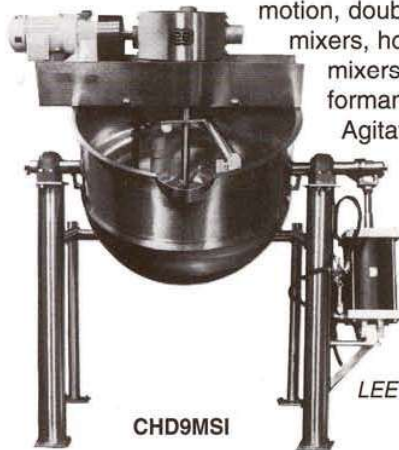
FLUSH MOUNT
SENSOR



TEMPERATURE
RECORDER/CONTROLLER

Agitators

Lee heavy-duty agitation systems are designed to mix all types of products, thoroughly and efficiently. Standard styles, including single motion, double-motion, triple-motion high-shear mixers, horizontal blenders and prop-type mixers are engineered for maximum performance and reliability in all Lee vessels.



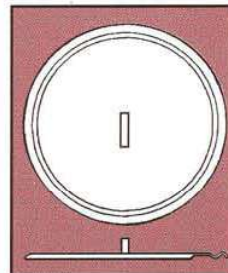
CHD9MSI

Agitator options include stationary, portable, tilting, vacuum/pressure installation and an inclined design which provides a combination of blending and folding along with thorough mixing for even high viscosity products!

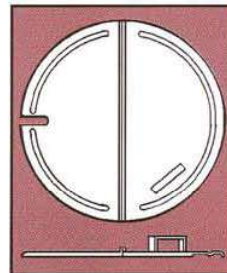
LEE Double-Motion Inclined Trunnion Kettle

Covers

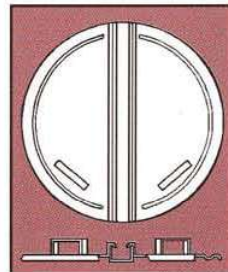
Various styles of sanitary covers are offered for all types of Lee vessels. Two- or three-piece covers can be either lift-off or hinged. Any cover can be furnished with special fittings or openings. All Lee vessels can be designed to include a vacuum/pressure style cover.



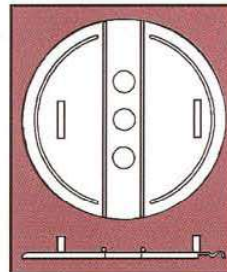
One-Piece



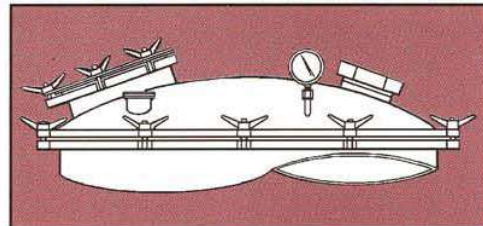
Two-Piece Sanitary Hinged



Two-Piece Lift-Off



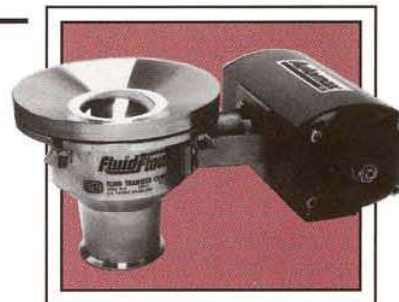
Three-Piece Hinged



Pressure or Vacuum Cover

Flush-Type Sanitary Outlet Valves

This exclusive Lee ball valve with sanitary features is a flush type design which assures complete product processing and discharge. CIP features and heating/cooling jackets are offered for special applications. Various actuator options and controls are also available for automation. Both flush-type and in-line ball valves are USDA and 3A approved. Contact LEE Fluid Transfer Division for additional information.



Automatic Flush-Type Ball Valve



PROCESS SYSTEMS & EQUIPMENT

DIVISION OF LEE INDUSTRIES, INC.

P.O. Box 687

Phillipsburg, PA 16866

FAX: (814) 342-5660 Phone: (814) 342-0470

BULLETIN 100G 83086
Rev 9-96